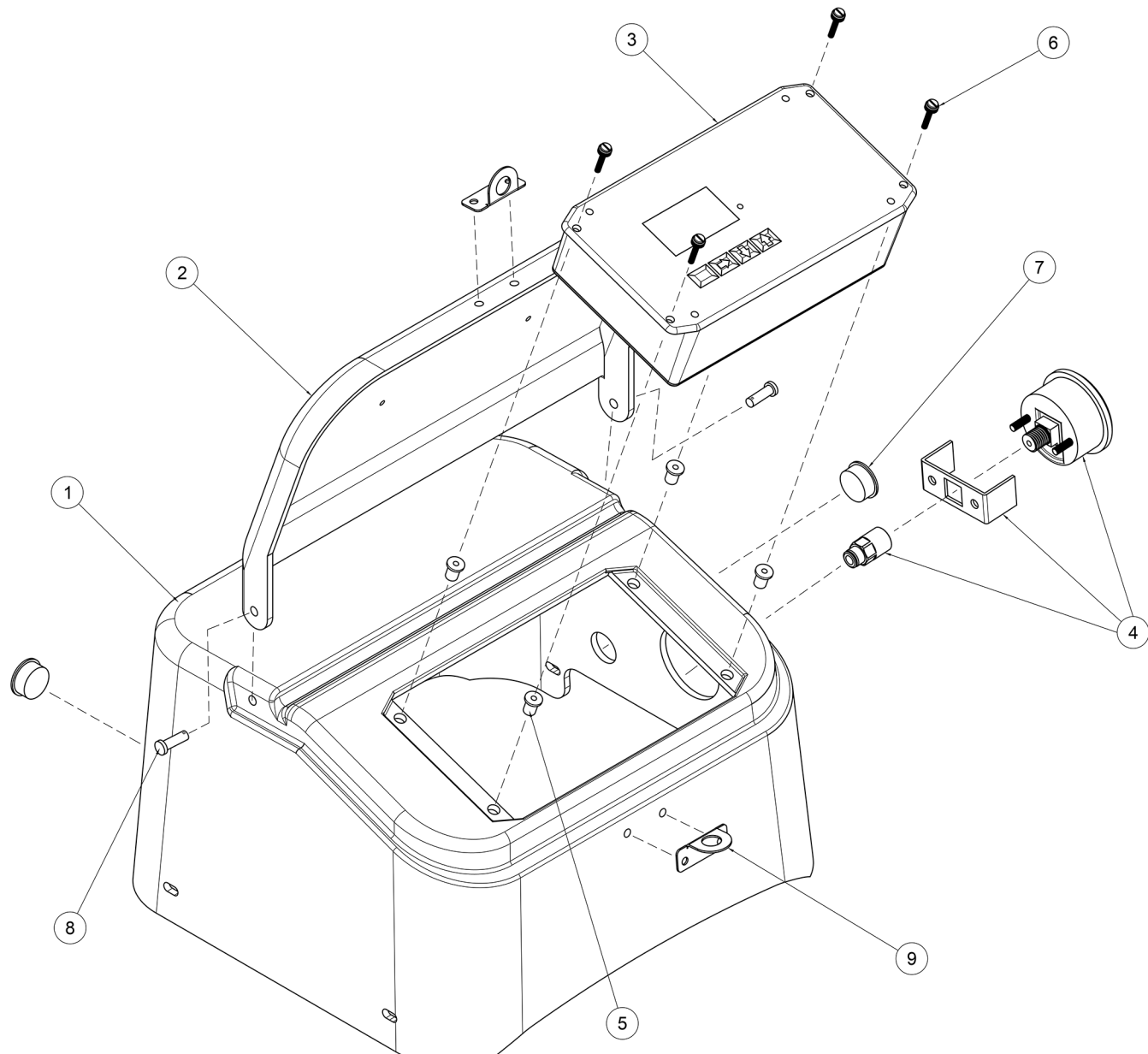


D

C

B

A



PARTS LIST				
ITEM	QTY	PART NUMBER	PART NAME	DESCRIPTION
1	1	10963	GEN 1.3 PLASTIC SHROUD	GEN 1.3 PLASTIC ENCLOSURE
2	1	10964	PLASTIC ENCLOURE LID V2	LID FOR GEN 1.3 PLASTIC ENCLOSURE
3	1	10975	GEN 1.3 CONTROLLER MODULE V5	CONTROLLER MODULE FOR GEN 1.3
4	1	21037	PRESSURE GAUGE ASSEMBLY V8	PRESSURE GAUGE ASSEMBLY (INCLUDES GAUGE, FITTING, AND BRACKET)
5	4	11075	CONTROLLER WELL NUT INSERT V5	CONTROLLER WELLNUT INSERT
6	4	13065	CONTROLLER THUMBSCREW V2	PLASTIC THUMB SCREW FOR CONTROLLER
7	2	11070	0.875" HOLE PLUG BLACK V4	HOLE PLUG USED TO COVER HOLES LEADING TO PUMP BYPASS AND ZONE KIT.
8	2	11045	PUSH-IN LID FASTENER V2	PUSH-IN LID FASTENER FOR GEN 1.3 PLASTIC ENCLOSURE LID
9	2	11030	GEN 1.3 PADLOCK EYE BRACKET V4	PADLOCK EYE BRACKET


D

C

B

A

PROPRIETARY AND CONFIDENTIAL

	PROJECT		Gen 1.3		
	TITLE		Gen 1.3 Shroud Assembly Parts Diagram		
APPROVED		SIZE	CODE	DWG NO	REV
CHECKED		D			
DRAWN Jose Marciano		10/21/22	SCALE 1:1.25	WEIGHT	SHEET 1/1

8 7 6 5 4 3 2 1

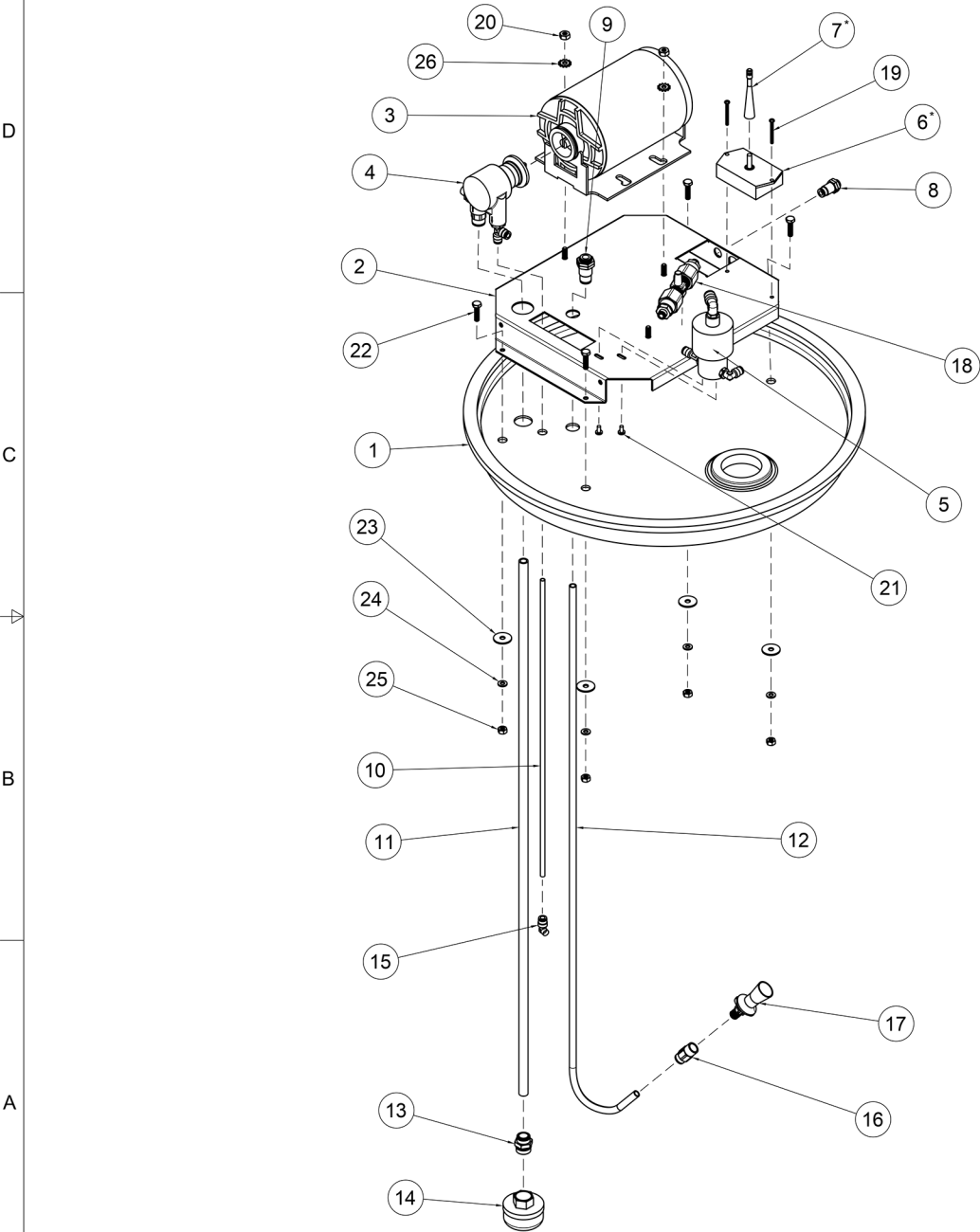
2 1

D

C

B

A



PARTS LIST				
ITEM	QTY	PART NUMBER	PART NAME	DESCRIPTION
1	1	10285	DRUM LID V2	55 GAL DRUM LID
2	1	11025	GEN 1.3 CHASSIS V6	GEN 1.3 SHEET METAL CHASSIS
3	1	10800	MOTOR 1/2 HP V5	MOTOR 1/2 HORSEPOWER W/ MOUNTING BRACKET
4	1	21005	BRASS PUMP ASSEMBLY V3	BRASS PUMP ASSEMBLY W/ FITTINGS
5	1	21010	AGITATION VALVE ASSEMBLY V2	GEN 1.3 AGITATE VALVE ASSEMBLY (INCLUDES FITTINGS)
6*	1	15190	IMIST2 READY RECEIVER (WHITE) V4	IMIST2 READY RECEIVER FOR WHITE REMOTE AND IMIST2 GATEWAY
7*	1	14933	IMIST2 RECEIVER ANTENNA V5	ANTENNA FOR IMIST2 READY RECEIVER
8	1	10166	BULKHEAD 1/4" V3	BULKHEAD CONNECTING INTERNAL PLUMBING TO EXTERNAL NOZZLE CIRCUIT
9	1	10167	BULKHEAD 3/8" V3	BULKHEAD FITTING CONNECTING AGITATOR PLUMBING TO MIXING EDUCTOR TUBE
10	1	10380	AUTO-DRAIN LINE V2	20" LINE OF 1/4" NYLON TUBING BLACK
11	1	10380	SUCTION TUBE V2	SUCTION PIPE 3/8" ID (PEX)
12	1	10954	TUBE FOR MIXING EDUCTOR V2	J-TUBE FOR AGITATION
13	1	10136	SUCTION FILTER FITTING V4	PRO-FIT MALE CONNECTOR (1/2" 1/2")
14	1	10949	SUCTION FILTER V6	SUCTION FILTER
15	1	10427	AUTO-DRAIN VALVE V4	AUTO-DRAIN ELBOW
16	1	10121	MIXING EDUCTOR FITTING V3	STRAIGHT FEMALE CONNECTOR (3/8" 1/4")
17	1	10952	MIXING EDUCTOR V2	GEN 1.3 MIXING EDUCTOR FOR AGITATION
18	1	22090	LEAK DETECTION KIT V5	BRASS LEAK DETECTION KIT
19	2	10444	SCREW, MACHINE, PAN HEAD STAINLESS, 6-32 X 1 1/2 V2	MOUNTING SCREWS FOR IMIST2 REMOTE RECEIVER
20	2	10442	NUT, HEX HVY SS, 14-20 V2	HEAVY HEX NUT, STAINLESS STEEL, 14-20
21	2	10446	SCREW, 10-32 X 3/8 SEMS STAINLESS V3	MOUNTING SCREWS FOR AGITATION VALVE ASSEMBLY
22	4	10436	STAINLESS 1/4"-20 X 1" HEX CAPSCREW V2	SCREW USED TO MOUNT GEN 1.3 CHASSIS TO DRUM LID
23	4	10431	STAINLESS 1/4" X 1" FENDER WASHER V2	FENDER WASHER USED TO MOUNT GEN 1.3 CHASSIS TO DRUM LID
24	4	10439	STAINLESS 1/4 LOCK WASHER - SPLIT V4	LOCK WASHER USED TO MOUNT GEN 1.3 CHASSIS TO DRUM LID
25	4	10438	STAINLESS 1/4-20 NUT V3	HEX NUT USED TO MOUNT GEN 1.3 CHASSIS TO DRUM LID
26	2	10441	INT/EXT WASHER, 1/4" ZP V2	WASHER FOR MOTOR MOUNTING BRACKET

NOTE:
* GEN 1.3 UNITS PURCHASED **PRIOR TO MID - 2017** WILL HAVE A BLACK REMOTE RECEIVER (PN: 10903)
* GEN 1.3 UNITS PURCHASED **PRIOR TO MID - 2017** WILL HAVE AN ANTENNA FOR A BLACK RECEIVER (PN: 10961)

PROPRIETARY AND CONFIDENTIAL

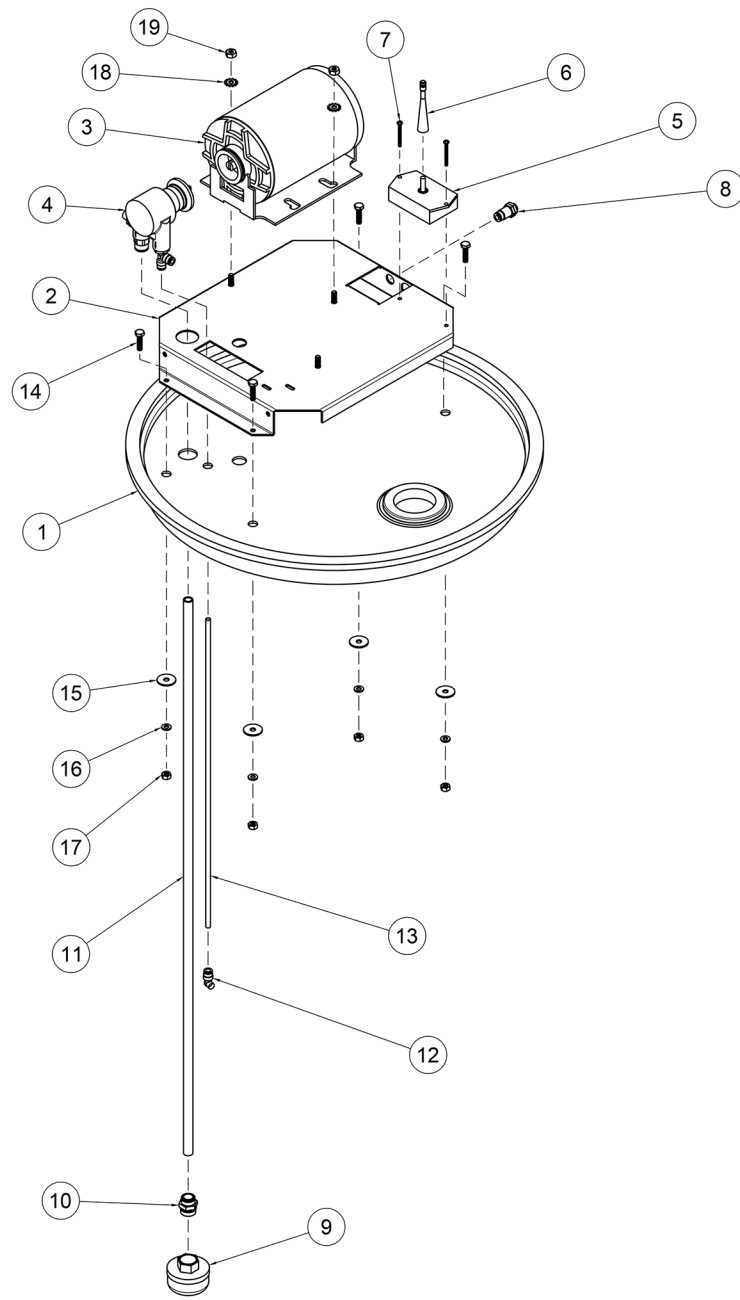
PROJECT Gen 1.3		TITLE iMist2-Ready Chassis Assembly Parts Diagram	
APPROVED	SIZE D	CODE	DWG NO
CHECKED	D	SCALE 1:1.3.25	REV
DRAWN Jose Marciano	10/24/22	WEIGHT	SHEET 1/1

D

C


B

A



PARTS LIST			
ITEM	QTY	PART NUMBER	DESCRIPTION
1	1	10285	DRUM LID V2
2	1	11025	GEN 1.3 CHASSIS V6
3	1	10800	MOTOR 1/2 HP V5
4	1	21005	BRASS PUMP ASSEMBLY V3
5	1	10903	BLACK REMOTE RECEIVER V2
6	1	10961	ANTENNA FOR BLACK RECEIVER V2
7	2	10444	SCREW, MACHINE, PAN HEAD STAINLESS, 6-32 X 1 1/2 V2
8	1	10166	BULKHEAD 1/4" V3
9	1	10949	SUCTION FILTER V6
10	1	10136	SUCTION FILTER FITTING V4
11	1	10380	SUCTION TUBE V2
12	1	10427	AUTO-DRAIN VALVE V4
13	1	10360	AUTO-DRAIN LINE V2
14	4	10436	STAINLESS 1/4"-20 X 1" HEX CAPSCREW V2
15	4	10431	STAINLESS 1/4" X 1" FENDER WASHER V2
16	4	10439	STAINLESS 1/4 LOCK WASHER - SPLIT V4
17	4	10438	STAINLESS 1/4-20 NUT V3
18	2	10441	INT/EXT WASHER, 1/4" ZP V2
19	2	10442	NUT, HEX HVY SS, 14-20 V2

PROPRIETARY AND CONFIDENTIAL

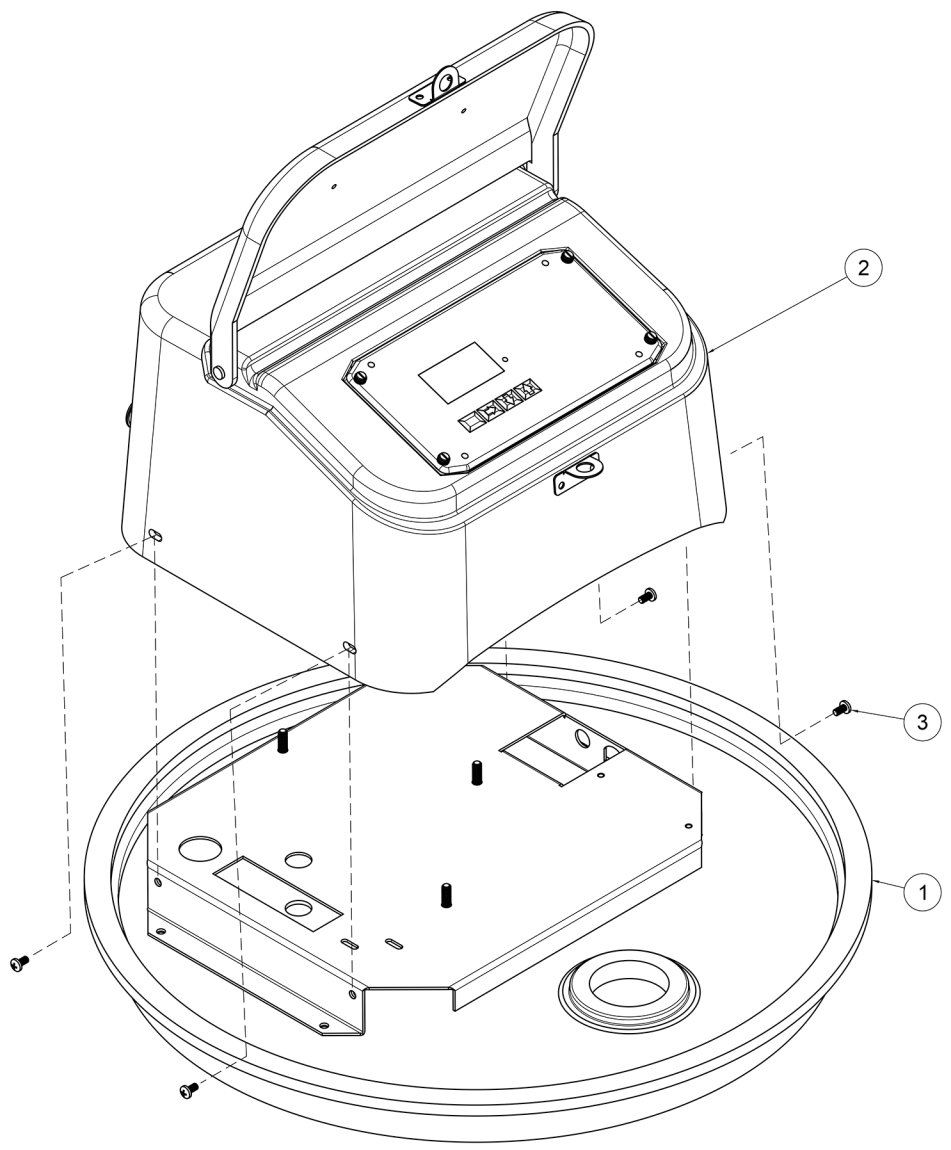
		PROJECT		Gen 1.3	
		TITLE		No-Agitator Chassis Assembly Parts Diagram	
APPROVED	CHECKED	SIZE	CODE	DWG NO	REV
DRAWN	Jose Marciano	10/25/22	SCALE 1:3.25	WEIGHT	SHEET 1/1

D

C


B

A



PARTS LIST				
ITEM	QTY	PART NUMBER	PART NAME	DESCRIPTION
1	1	N/A	0. GEN 1.3 CHASSIS ASSEMBLY V15	FULL ASSEMBLY OF GEN 1.3 CHASSIS
2	1	N/A	0. FULL GEN 1.3 SHROUD ASSEMBLY V9	FULL ASSEMBLY OF GEN 1.3 ENCLOSURE
3	4	10445	SCREW, MACHINE, PAN HEAD STAINLESS 10-32 X 3/8 V2	PLASTIC ENCLOSURE MOUNTING SCREWS

PROPRIETARY AND CONFIDENTIAL

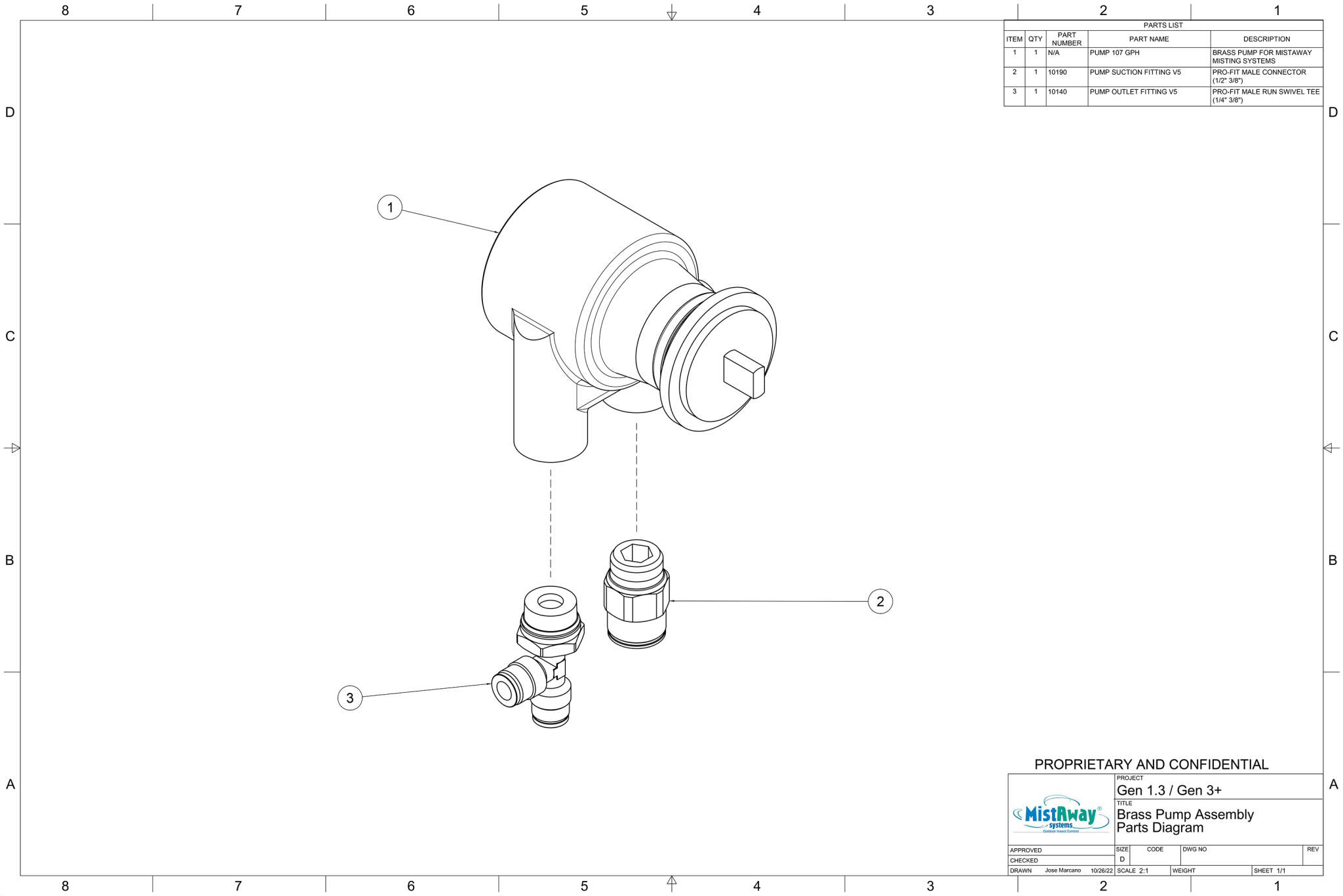
	PROJECT			
	Gen 1.3			
	TITLE			
	Gen 1.3 Final Assembly Parts Diagram			
APPROVED	SIZE	CODE	DWG NO	REV
CHECKED	D			
DRAWN	Jose Marciano	10/24/22	SCALE 1:2.75	WEIGHT
			SHEET 1/1	

D

C


B

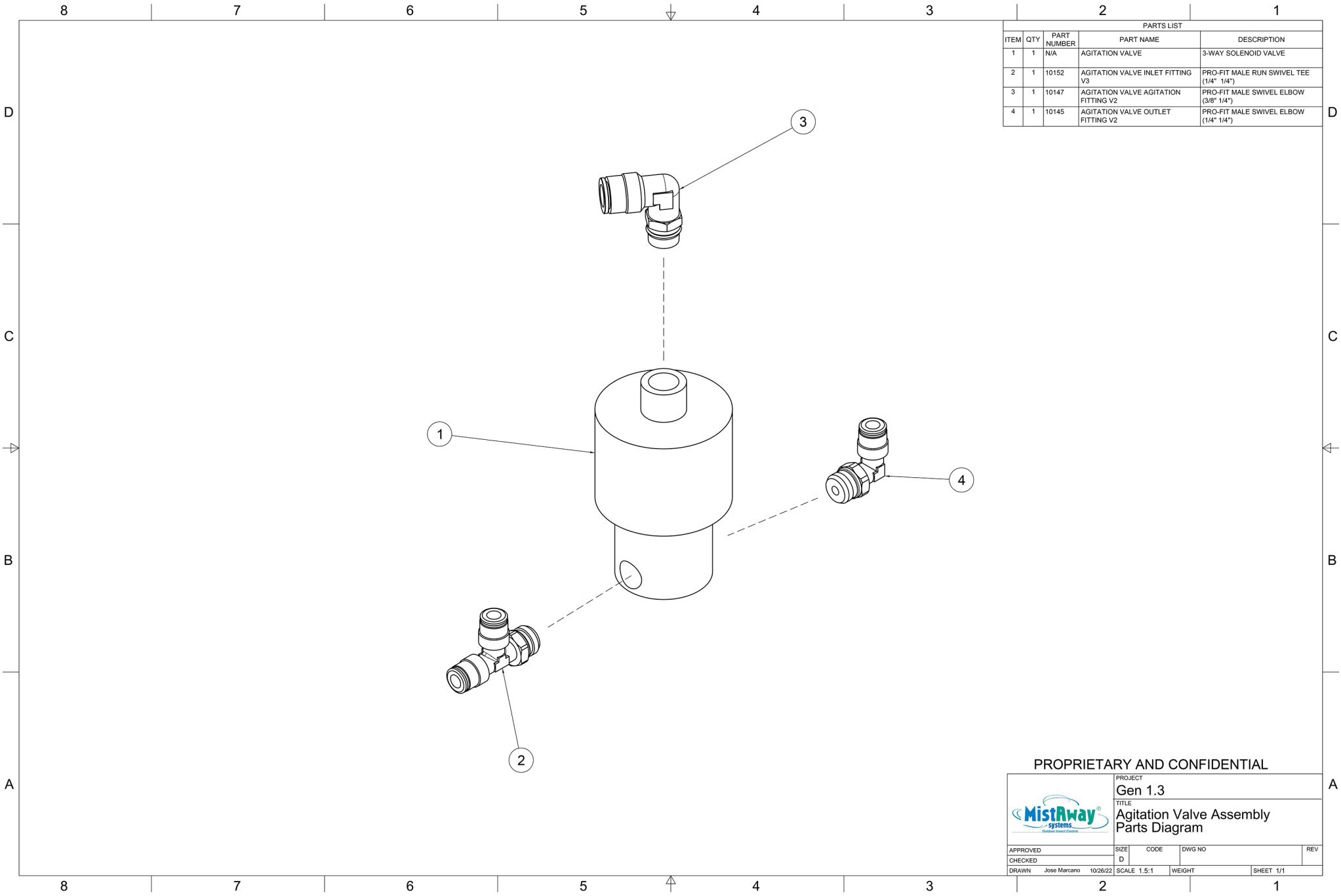
A



PARTS LIST				
ITEM	QTY	PART NUMBER	PART NAME	DESCRIPTION
1	1	N/A	PUMP 107 GPH	BRASS PUMP FOR MISTAWAY MISTING SYSTEMS
2	1	10190	PUMP SUCTION FITTING V5	PRO-FIT MALE CONNECTOR (1/2" 3/8")
3	1	10140	PUMP OUTLET FITTING V5	PRO-FIT MALE RUN SWIVEL TEE (1/4" 3/8")


PROPRIETARY AND CONFIDENTIAL

	PROJECT		Gen 1.3 / Gen 3+	
	TITLE		Brass Pump Assembly Parts Diagram	
	APPROVED		SIZE	CODE
CHECKED		D	DIWG NO	REV
DRAWN Jose Marciano 10/26/22		SCALE 2:1	WEIGHT	SHEET 1/1



PARTS LIST				
ITEM	QTY	PART NUMBER	PART NAME	DESCRIPTION
1	1	N/A	AGITATION VALVE	3-WAY SOLENOID VALVE
2	1	10152	AGITATION VALVE INLET FITTING V3	PRO-FIT MALE RUN SWIVEL TEE (1/4" 1/4")
3	1	10147	AGITATION VALVE AGITATION FITTING V2	PRO-FIT MALE SWIVEL ELBOW (3/8" 1/4")
4	1	10145	AGITATION VALVE OUTLET FITTING V2	PRO-FIT MALE SWIVEL ELBOW (1/4" 1/4")

PROPRIETARY AND CONFIDENTIAL

	PROJECT		Gen 1.3	
	TITLE		Agitation Valve Assembly Parts Diagram	
APPROVED		SIZE	CODE	DWG NO
CHECKED		D		
DRAWN Jose Marciano		10/26/22	SCALE 1.5:1	WEIGHT
				SHEET 1/1